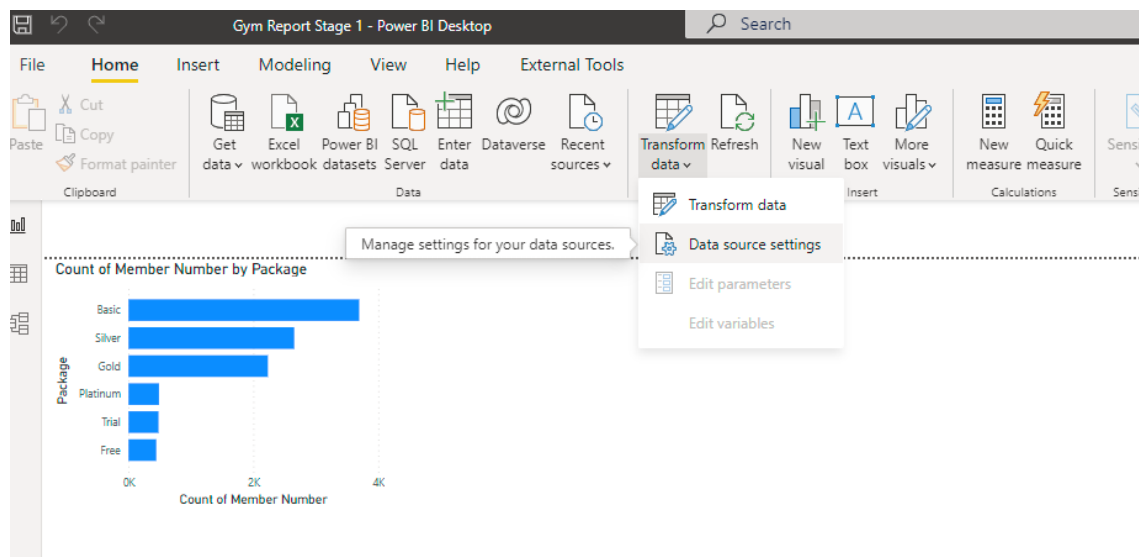


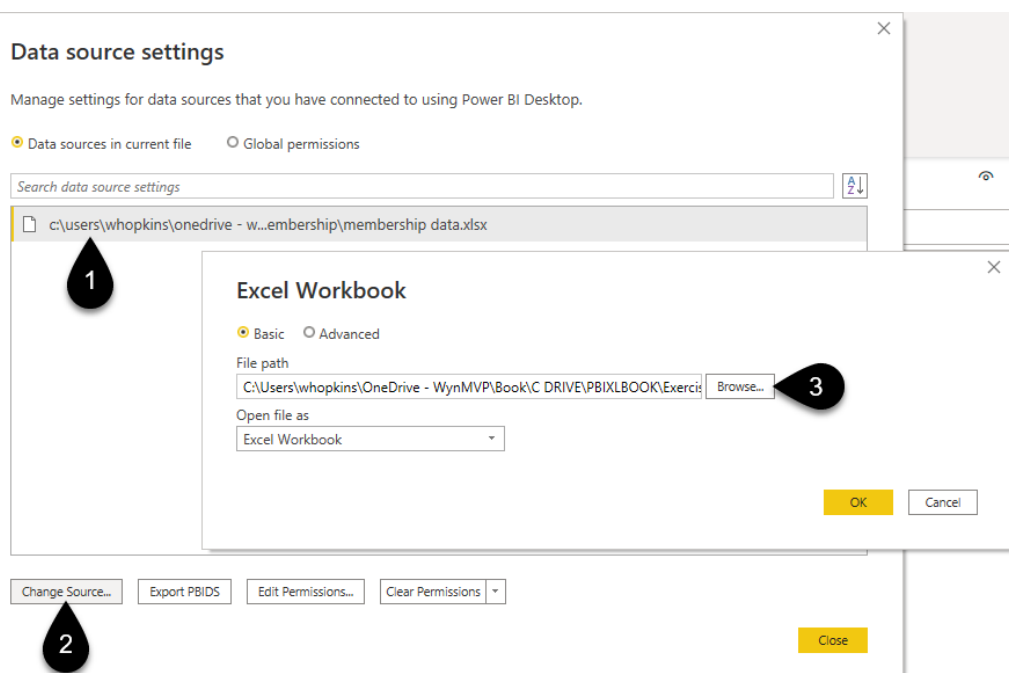
Changing Connections to your system

If you'd like to look at the Power Query steps behind my example solutions you will need to change the connection from my folder path to yours.

- Open a solution file
- Click the Drop Down for Transform Data and choose Data source Settings



- Then click in the file path (1)
- Choose Change Source (2)
- Browse for your version of the file (3) and click OK
- You may also need to click Apply Changes if that option appears



After doing this you will be able to click the Transform data button on the home tab and see the Power Query steps in their full glory.